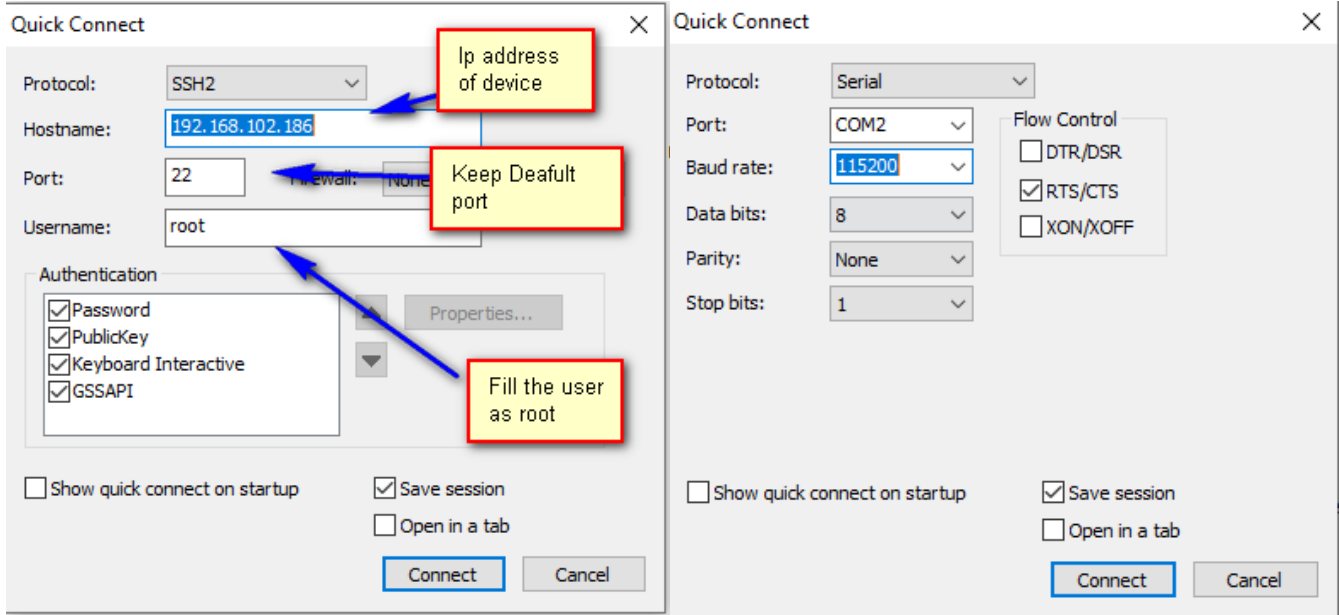


# How to Test and collect log for Video Guard alarm

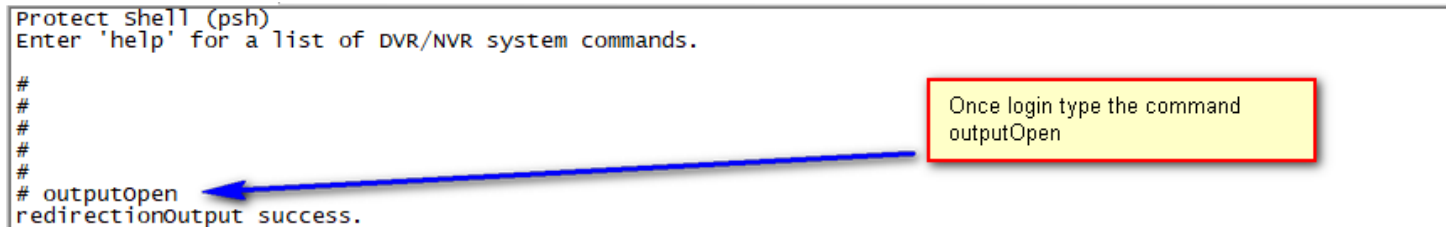
If the NVR /DVR fail to send alarm to VG, you can verify the alarm sent by device or not.

1, Need to use the SSH tool like secure CRT or Putty to verify.

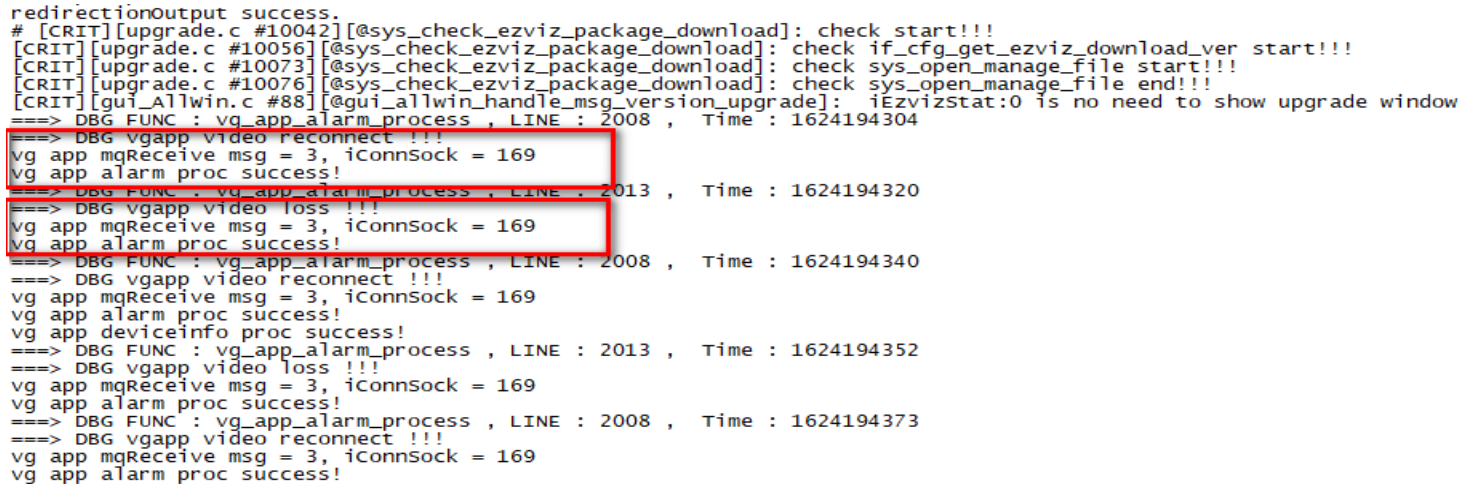
Login to Device using Secure CRT. Save the LOG.



Once login to NVR –Secure CRT.



We can see Video loss and Video Reconnect alarm sent successfully



### If VG connect success

```
====recv: [recvd: 12, need: 12, error: 0]
vg app mqReceive msg = 1, iConnSock = 169
vg app rcv server OK!!!
```

### If VG fail to connect bcoz of any setting error.

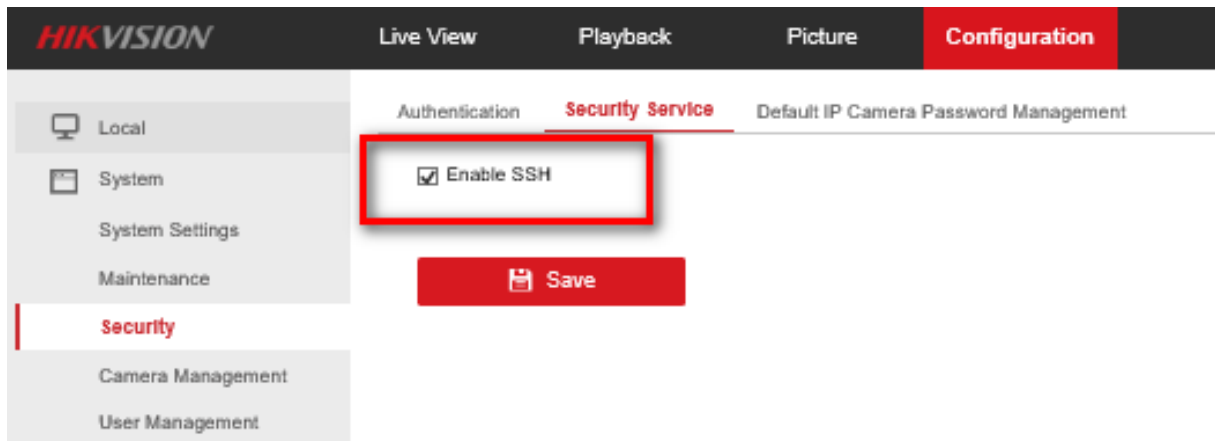
```
Adjust date/time from RTC.
stime start 1624194579
stime finish 1624194579
vg app rcv server connect error [need : 12, rcv : 0, 0]
```

After checking please type below command to close

### outputClose

```
# outputClose
redirectionOutputCancel success.
# █
```

Open the SSH from below Menu or use serial cable to the device.



Firmware, which have latest build, which support **Capture Packet by USB Flash Drive**.

Attach a USB to NVR / DVR, Make sure USB is detected by device

Go to Configuration – Maintenance – Diagnose

Add IP of VG in the Filtering parameter

Select LAN interface where VG connected

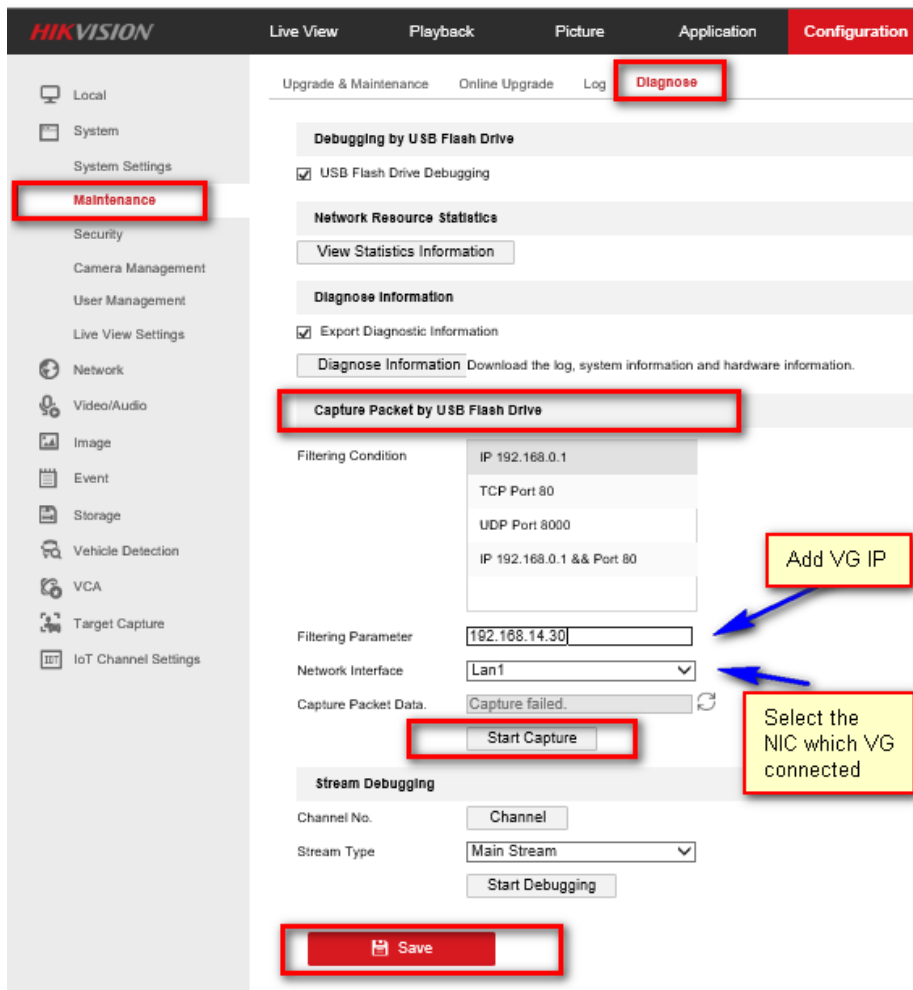
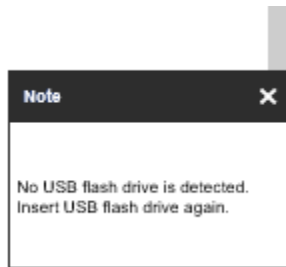
Click start Capture and Click SAVE. Once it start capture show YES.

Trigger all alarm. 1. Video Loss. 2. Video Reconnect. 3. HDD Full. 4. HDD Error.

For The Recorder Online, Offline not sent by device. Its generate from Heartbeat, So no configuration in device.

Network Interface	<input type="text" value="Lan1"/>
Capture Packet Data.	<input type="text" value="Yes"/> 

If USB not detect it, give below error



The screenshot shows the Hikvision Configuration interface. The left sidebar has "Maintenance" highlighted. The main content area is under "Diagnose" and includes sections for "Debugging by USB Flash Drive", "Network Resource Statistics", "Diagnose Information", and "Capture Packet by USB Flash Drive".

The "Capture Packet by USB Flash Drive" section has the following settings:

- Filtering Condition: IP 192.168.0.1, TCP Port 80, UDP Port 8000, IP 192.168.0.1 && Port 80
- Filtering Parameter: 192.168.14.30
- Network Interface: Lan1
- Capture Packet Data: Capture failed.



Annotations with arrows point to:

- "Add VG IP" pointing to the Filtering Condition list.
- "Select the NIC which VG connected" pointing to the Network Interface dropdown.

Buttons for "Start Capture" and "Save" are also highlighted with red boxes.

Once All Alarm tested. Click SAVE, Click STOP capture and Click SAVE.

You will find similar File in USB, Please sent us to verify.

-  2021\_07\_13\_07\_48\_57
-  2021\_07\_13\_07\_50\_05

7/13/2021 7:49 AM	Wireshark capture...	47,746 KB
7/13/2021 7:50 AM	Wireshark capture...	6,590 KB